

AD-GS11103 & AD-GS11503

Road Safety Parking Automatic Boom Barrier

Specifications :

Model:	AD-GS11103 Boom Barrier Gate	Barrier arm up and down time:	standard is 6S, fast speed is 3S, high speed is 2S
Housing color:	Yellow ,orange,grey	Housing weight:	80kg
Working Temperature:	-25°C—+75°C	Barrier housing dimension:	350*280*1000mm
Working:humility	≤90% no condensation	Packaging carton size:	390*340*1060mm
Input power :	AC220V±10% 50HZ	Packaging wooden case size:	440*420*1220mm
Control input power:	≤500W	Installation direction:	Fixed left(optional)
Remote control frequency:	433.92MHz	Barrier arm type:	Straight barrier
Motor power:	100W	Barrier arm length:	<= 6M(standard) > 6M(customized)
Working voltage:	DC/AC 12V	Barrier height from the ground:	800mm
Controller port:	Vehicles detect signal port ,LED alarm port,limit port,Correlation port,485 port,IP network port ,220V input,12V input,open, close, stop port		



AD-GS11103 & AD-GS11503

Road Safety Parking Automatic Boom Barrier

Settings :

- ☉ The Barrier is a cold-rolled steel plate, 2.0mm thickness, the automatic spray painting process, 2. 100W high-power pure copper motor durable, strong power.
- ☉ Motor with overheat protection could protect motor damage to avoid. When power off can also be operation manually to ensure vehicles pass in and out normally.
- ☉ Function of the vehicle going through the barrier arm falling automatically, support outer loop detector and inner loop detector.
- ☉ Equipped with Anti-hit infrared correlation device to prevent the barrier falling down hit pedestrians and causing an accident.
- ☉ Match buckle detection protection device, it can put an end to car break caused by mistake.
- ☉ With barrier delay drop-down function, time is adjustable.
- ☉ Can connect to open, close, stop port (signal switch) wire control, and remote control for customer optional.
- ☉ With the cut-off limit state exit function equipped with a parking management system can accurately locate the vehicle passing and exiting, arm diversification.
- ☉ Barrier, standard length is 0~6m optional, the maximum is 9m, (more than 6m need to customize), the barrier arm smoothly up and down, reliable, back and forth barrier down just need 6 seconds. (standard is 6S, fast speed is 3S, high speed is 2S).
- ☉ In accordance with user demand equipped with traffic light control function.

Model	AD-GS11103	AD-GS11203	AD-GS11303-2	AD-GS11303-3	AD-GS11503	AD-GS11503HQ
Rail Type	Straight Boom	Folder Boom	Two Fences Boom	Three Fences Boom	Circle Boom	Circle Boom
Speed Barrier	5s ~ 6s	5s ~ 6s	5s ~ 6s	5s ~ 6s	3s ~ 2s	2s

AD-GS11103 & AD-GS11503

Road Safety Parking Automatic Boom Barrier



2.0mm cold rolled steel, car paint

2.0mm thickness of cold rolled steel, the stronger housing. Professional car painting process and UV test, color won't fade keep within 3 - 5.

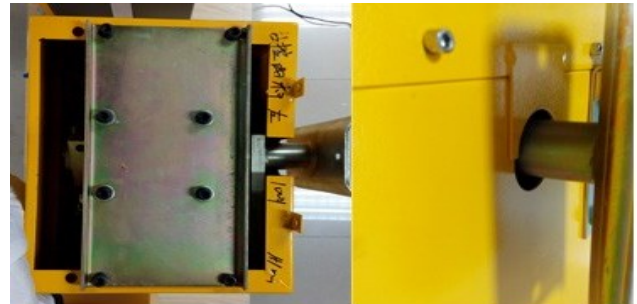
Irreversible gear motor

Control by badge reader, control panel

Buried loop

The bar's precision four-link design is easier to maintain

The precision design of four bar linkages makes door boom move smoothly, to slow down and up the bottom. And the limit of the boom movement limiter within 90 degrees. Boom door has the waterproof design to make sure the boom door could use outdoors.



Full copper motor, strong spring

Full copper motor, overheat protection. Avoid motor broken due to high temperature in the case when outdoor use. 6.5 strong spring, keep the top and bottom smooth smooth, not shake.

Transparent control box, simple operation

Transparent control box protects the control from council security working inside the accommodation. In case of fault, convenient and direct view. All ports has note, easy to understand. All wiring already connected before delivery, all power and use when get it.

