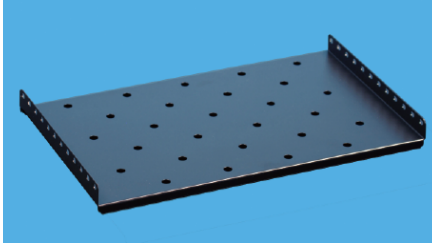
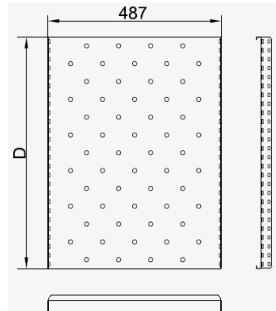


ADTRONICS® AD-SG Shelf

Fixed shelf



Dimension



Fixed shelf:

Used for placing equipment.

Material:

- SPCC Clod rolled steel t1.2.

Surface Finish:

- Degreasing, Vitrification, powder coated.

Loading capacity:

- 60 KG.

Definition of Color:

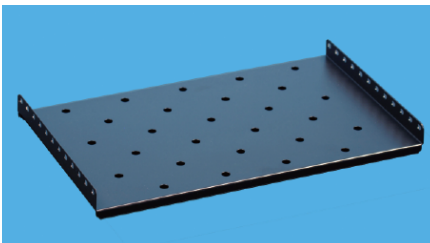
AD-SG. ■■■■■ . ■■ 01:RAL9004

AD-SG. ■■■■■ . ■■ 00:RAL7035

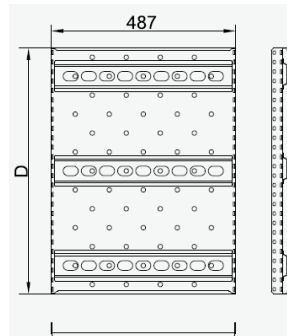
Specification

Model No.	Specification	D(mm)	Use
AD-SG. 0127.19 ■■	600 Depth Cabinets Fixed Shelf	275	600 Depth G line cabinet
AD-SG. 0147.19 ■■	800 Depth Cabinets Fixed Shelf	475	800 Depth G line cabinet
AD-SG. 0157.19 ■■	900 Depth Cabinets Fixed Shelf	575	900 Depth G line cabinet
AD-SG. 0165.19 ■■	1000 Depth Cabinets Fixed Shelf	650	1000/1100/1200 Depth G line cabinet

Heavy-duty fixed shelf



Dimension



Heavy-duty fixed shelf:

For applications when heavy loads up to 100kg.

Material:

- SPCC Clod rolled steel t1.2.

Surface Finish:

- Degreasing, Vitrification, powder coated.

Loading capacity:

- 100 KG.

Definition of Color:

AD-SG. ■■■■■ . ■■ 01:RAL9004

AD-SG. ■■■■■ . ■■ 00:RAL7035

Specification

Model No.	Specification	D(mm)	Use
AD-SG. 0327.19 ■■	600 Depth Cabinets Heavy-duty Fixed Shelf	275	600 Depth G line cabinet
AD-SG. 0347.19 ■■	800 Depth Cabinets Heavy-duty Fixed Shelf	475	800 Depth G line cabinet
AD-SG. 0357.19 ■■	900 Depth Cabinets Heavy-duty Fixed Shelf	575	900 Depth G line cabinet
AD-SG. 0365.19 ■■	1000 Depth Cabinets Heavy-duty Fixed Shelf	650	1000/1100/1200 Depth G line cabinet