

AD-PSS

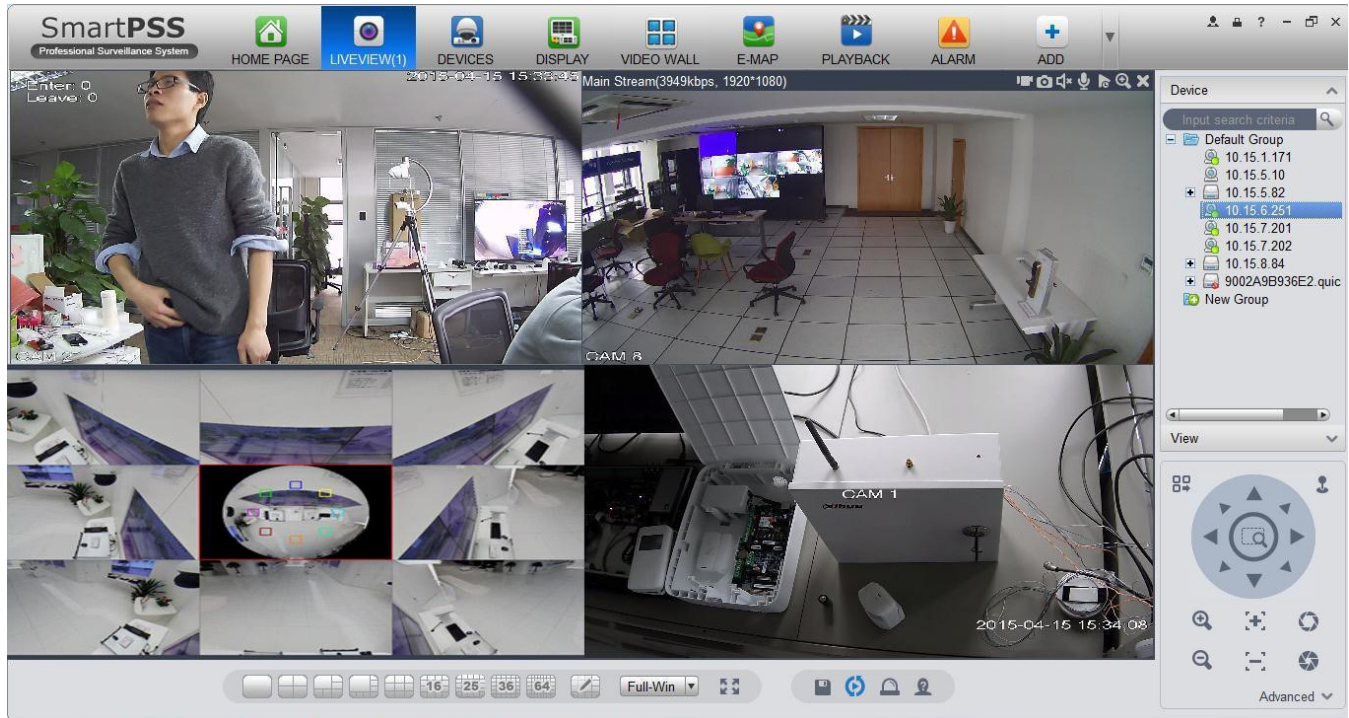
SMART Professional Surveillance System



Features

- Support 18 languages.
- Support IPC, PTZ, NVR, EVS, HCVR, NVS, NKB, VDP and etc.
- Support up to 128 live viewing channels, main or sub streams optional.
- Support 4K cameras.
- Support H.265 streams.
- Support IPv6 devices.
- Support Windows 10.
- Support Smart Track by linking a fisheye and PTZ.
- Support multiple tour tasks.
- One channel can be split into different windows.
- Multiple channels can be previewed in channel zero.
- Auto find/import/export supported.

AD-PSS



- Easy to manage up to 256 devices or 2000 channels.
- Up to 36 channels synchronous playback.
- Time bar and events playback modes available.
- Support joystick to control PTZ cameras.
- Support fisheye camera Virtual PTZ operation by mouse.
- Alarm can be triggered via different events including IVS (Optional).
- Support e-map, you can clearly view and manage all device locations.
- PC-NVR enables local storage recording.
- TV wall configuration and control.
- Support VDP monitoring, talking, announcement and configuration.
- Account management supported; and different users share different privileges.
- Log for event and user activities.
- Friendly GUI for an easy operation.
- Support P2P devices.
- Support fisheye image correction in both live viewing and playback.

AD-PSS

Technical Specifications

Version	Windows Version 1.14.0	MAC Version 1.11.1
Device to Use		
Supported Devices	HCVR, NVR, IPC, PTZ, NVS, EVS, NKB, VDP, Access Control and etc.	DVR, NVR, IPC, PTZ, NVS, EVS, NKB and etc.
Manage Devices	Max 256	Max 50
Manage Channels	Max 2000	Max 1024
Device Management	Auto find, Add, Delete, Device group, Reboot, Setup, Specify network segment.	
Health Report	Device status, Alarm info, HDD info	
Live Preview		
Video Display Split	1 / 4/ 6/ 8 / 9 / 16 / 25 / 36 or customized split for all versions	
Max Preview Screen	4	1
Features	Snapshot, Record, Audio, Talk, Instant playback, E-PTZ, Tours, Views, Fisheye correction, IVS, Stream types, Channel Zero, Adjustable aspect ratio	Snapshot, Record, Audio, Talk, Instant playback, E-PTZ, Tours, Views, Stream types, Channel Zero, Adjustable aspect
PTZ Control	Directions, PTZ, Focus, Iris, Preset, Tour, Pattern; Joystick control	
Alarm output control	Support	
Recording		
PC-NVR	32 Channels, 2TB each partition	Connects window's PC-NVR
Record Mode	Manual, Schedule (Regular, MD, Alarm), Stop	
Playback		
Video Source	Local PC (Manual record or alarm record), Device itself, PC-NVR	
Picture Source	Local PC (Manual Snapshot), Device itself	
Max Channels	36	
Duration	24h for one search	
Search Type	Certain time, Motion detection, Alarm, Smart search, Call ID	
Max task of Export	10 once	

AD-PSS

Technical Specifications

Features	Snapshot, E-PTZ, Audio, Speed 1/8x~8x,Faster/Slower play, Synchronization playback,Fisheye correction, Adjustable aspect ratio	Snapshot, E-PTZ, Audio, Speed 1/8x~8x,Faster/Slower play,Synchronization playback, Adjus-
Export	Export as .dav/.avi/.mp4/.asf	Export as .dav
Alarm Signal Monitoring		
Features	Schedule alarms, Setup actions, Operate/Memo alarm	
Alarm Type	External alarm, Video loss, Motion, Tampering, IVS events, HDD events	
Actions	Trigger recording, PTZ movement, Alarm, Popup video	
E-Map		
Number of Maps	Map group : Unlimited, Sub-Map, Layout : 64	
Image Format	JPEG / BMP	
Other Features		
PC-NVR	32 channels record	
Device Configure	Network, Encode, PTZ, Image, Event, Record, Disk, Account, Maintenance,Web	
Display	Remote control device's front panel screens	
Account	User and role management; privileges according to module & device	
Log	Client log, Remote device log, Operation log, System log, Alarm log	
Video Talk	Preview, Talk, Unlock, Call, Record, Announcement, Snapshot, Config	
System And OS		
System Requirement	CPU: Intel i3 or above; Memory: 2G or above; HDD: 80G or above	
OS	Window XP or above	OS 10.7 or above
Display resolution	1024 x 768 or above	
Languages	Chinese (Traditional), Czech, Danish, Dutch, English, Finnish, French, German, Greek, Italian, Japanese, Korean, Polish, Portuguese, Russian, Spanish, Thai, Vietnamese	
Performance is highly dependent on PC capacity, and the recommended configuration is just for reference.		